



*Excellence in Electronics*

PENTODE

TYPE

CK5847

The CK5847 (404A) is a heater-cathode type, high transconductance, sharp cut-off pentode of miniature construction. The design features of low noise, low interelectrode capacitances, and high transconductance make it suitable for service as a wide band RF or IF amplifier. It is designed for dependable operation in equipment with low plate supply voltages. The heater-cathode construction is designed to withstand many thousands of cycles of intermittent operation.

**MECHANICAL DATA**

ENVELOPE: T-6 1/2 Glass

BASE: Miniature Button 9-Pin

TERMINAL CONNECTIONS:

- |  |                     |
|--|---------------------|
| Pin 1 Grid #1                                | Pin 5 No Connection |
| Pin 2 No Connection                          | Pin 6 Plate         |
| Pin 3 Heater, Lower Internal Shield          | Pin 7 No Connection |
| Pin 4 Cathode, Grid #3 Upper Internal Shield | Pin 8 Grid #2       |
|  | Pin 9 Heater        |

MOUNTING POSITION: Any

**ELECTRICAL DATA**

DIRECT INTERELECTRODE CAPACITANCES: ( $\mu\text{fds}$ ) (With External Shield)

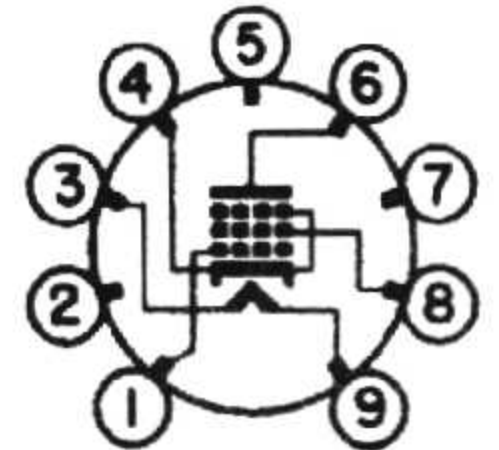
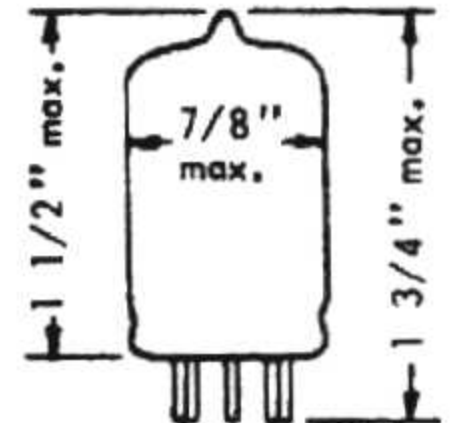
Grid to Plate	0.05 max.
Input	7.2
Output	3.15

RATINGS ABSOLUTE MAXIMUM VALUES:

Heater Voltage (ac or dc)	6.3 $\pm$ 10%	volts
Plate Voltage	200	volts
Grid #2 Voltage	165	volts
Plate Dissipation	3.3	watts
Grid #2 Dissipation	0.85	watts
Cathode Current	40	ma
Heater-Cathode Voltage	55	volts

CHARACTERISTICS AND TYPICAL OPERATION:

Heater Voltage	6.3	6.3	volts
Heater Current	0.3	0.3	A.
Plate Voltage	150	160	volts
Grid #2 Voltage	150	160	volts
Cathode Bias Resistance	110	600	ohms
Grid #1 Voltage	0	+8.5	volts
Plate Current	13.5	13.5	ma
Grid #2 Current	4.0	4.0	ma
Plate Resistance	0.2	0.2	meg
Transconductance	13,000	13,000	$\mu\text{mhos}$



BOTTOM VIEW

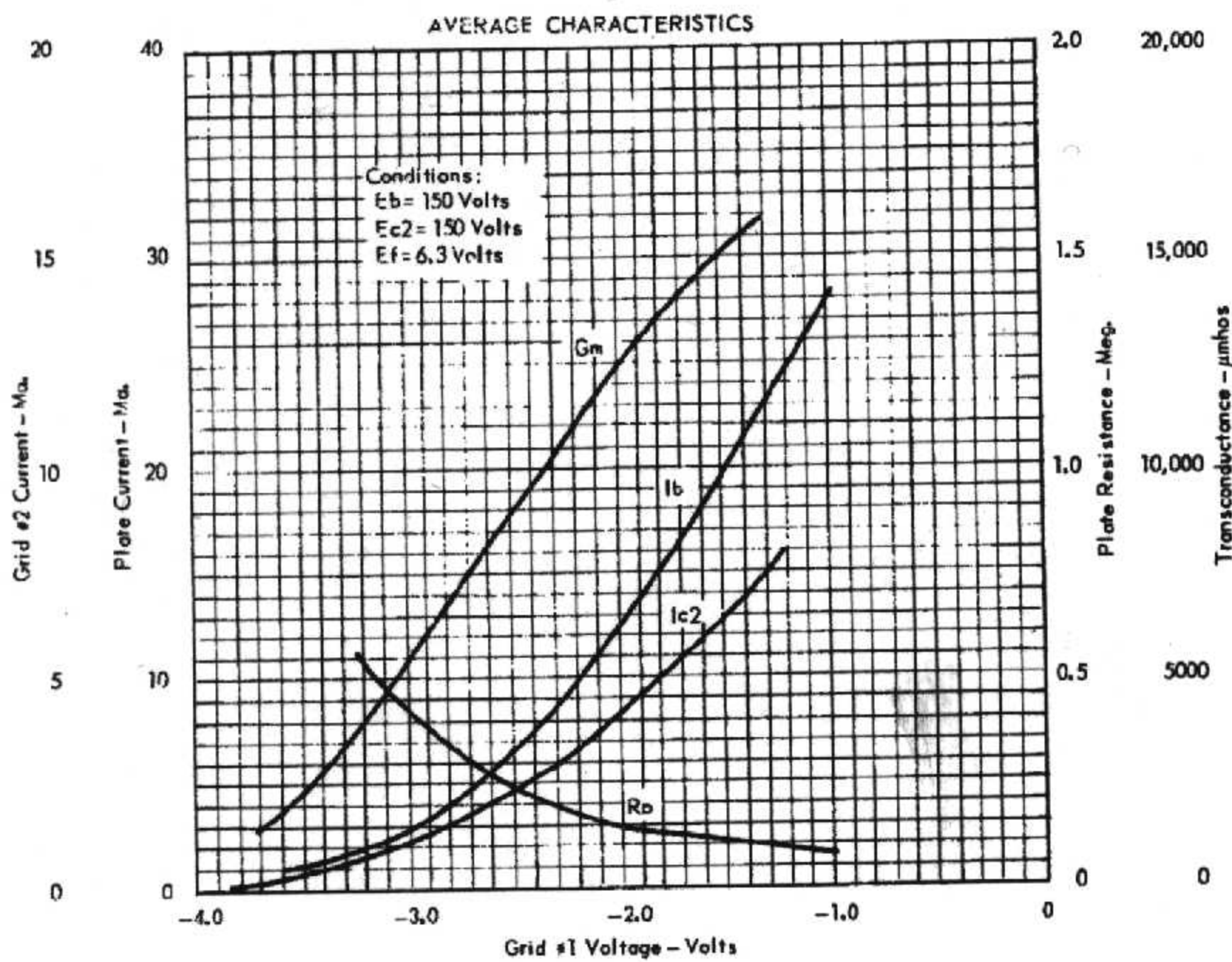
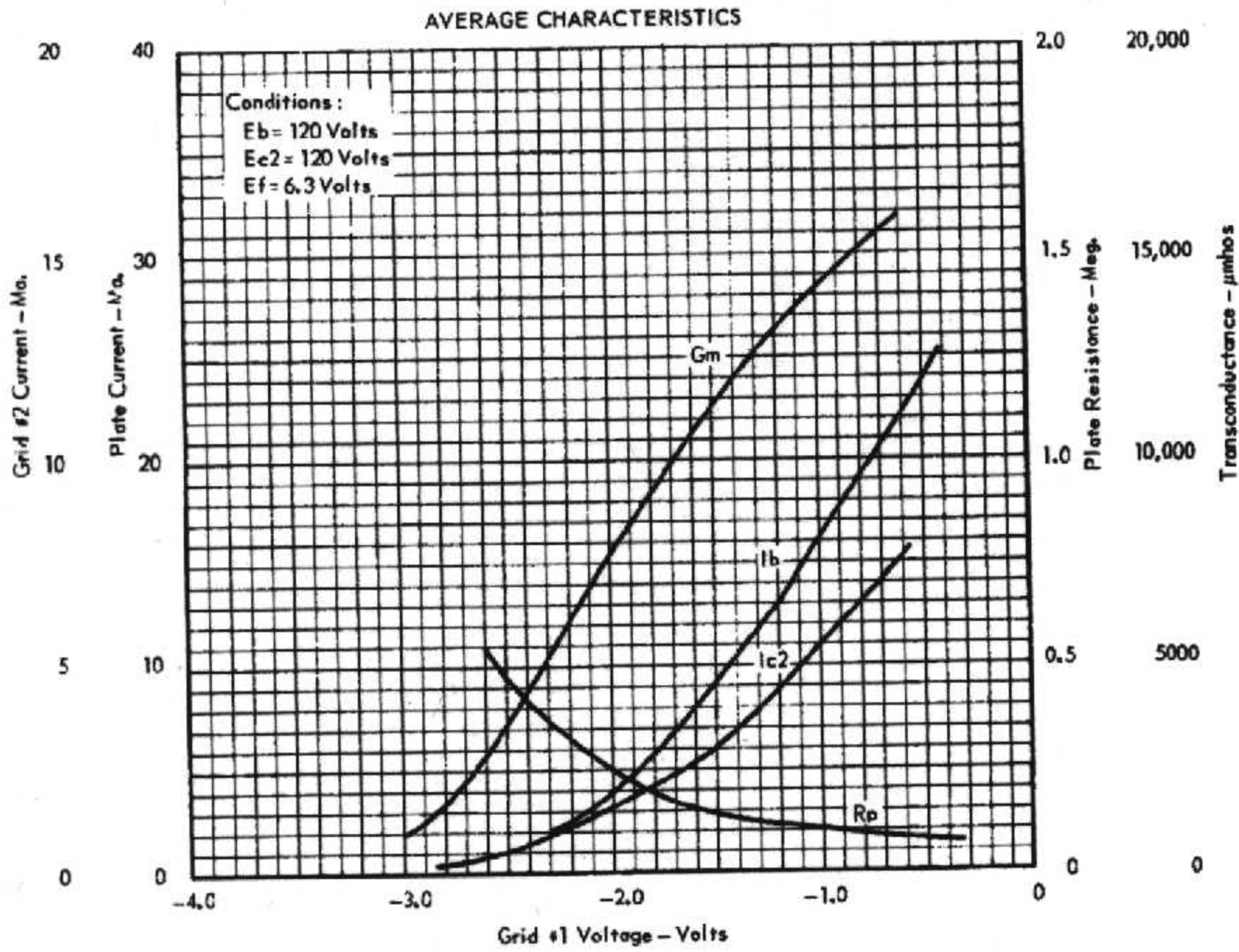
9X

Tentative Data

INDUSTRIAL COMPONENTS DIVISION



PENTODE



INDUSTRIAL COMPONENTS DIVISION

RAYTHEON COMPANY

55 CHAPEL ST., NEWTON 58, MASS.





PENTODE

